

ECOFYS



sustainable energy for everyone



There Are Many Roads to Paris

InGOS conference

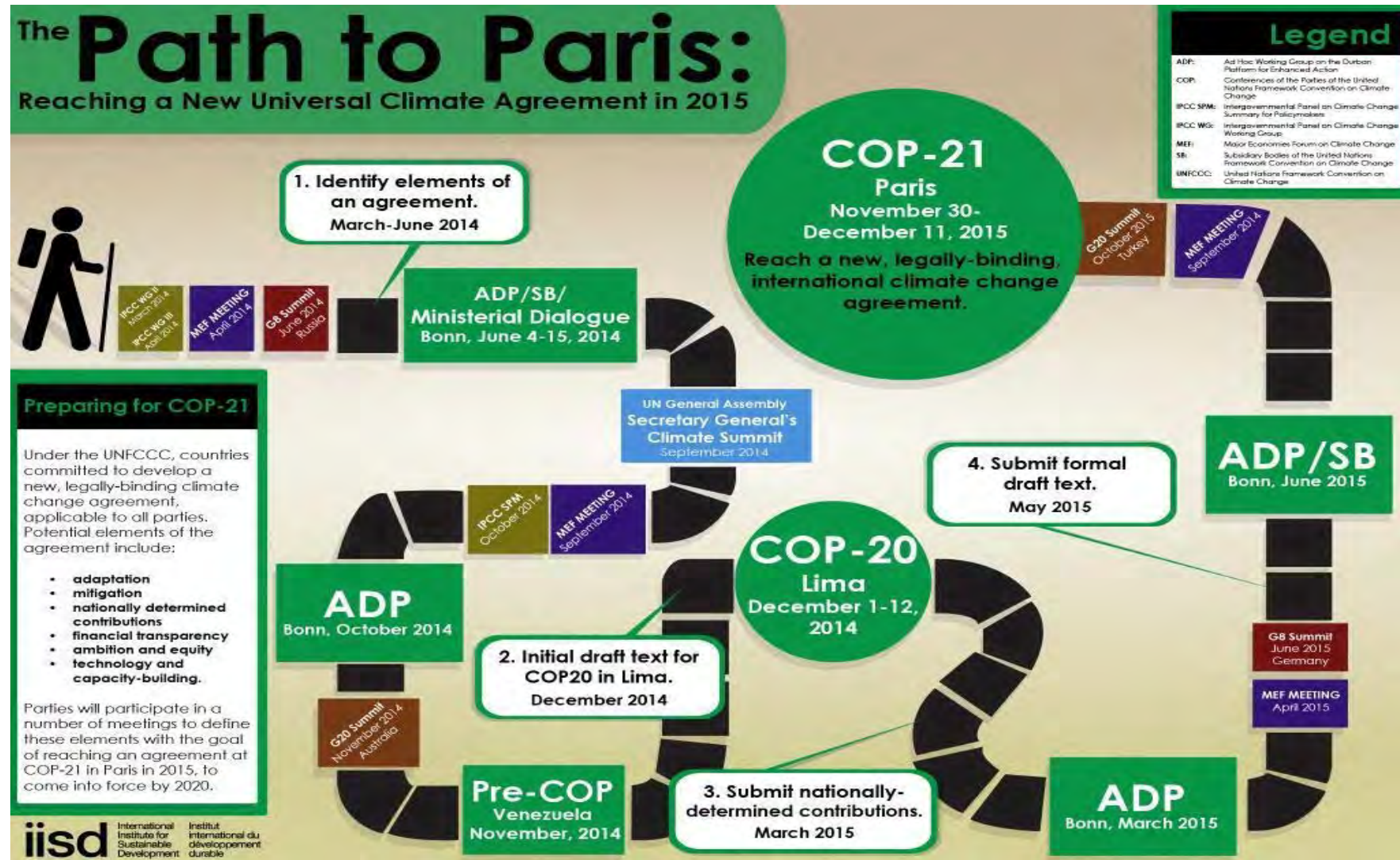
21-24 September 2015

Utrecht, The Netherlands

23/09/2015

Prof. dr. Kornelis Blok

On the way to Paris 2015



Climate Summit 2014



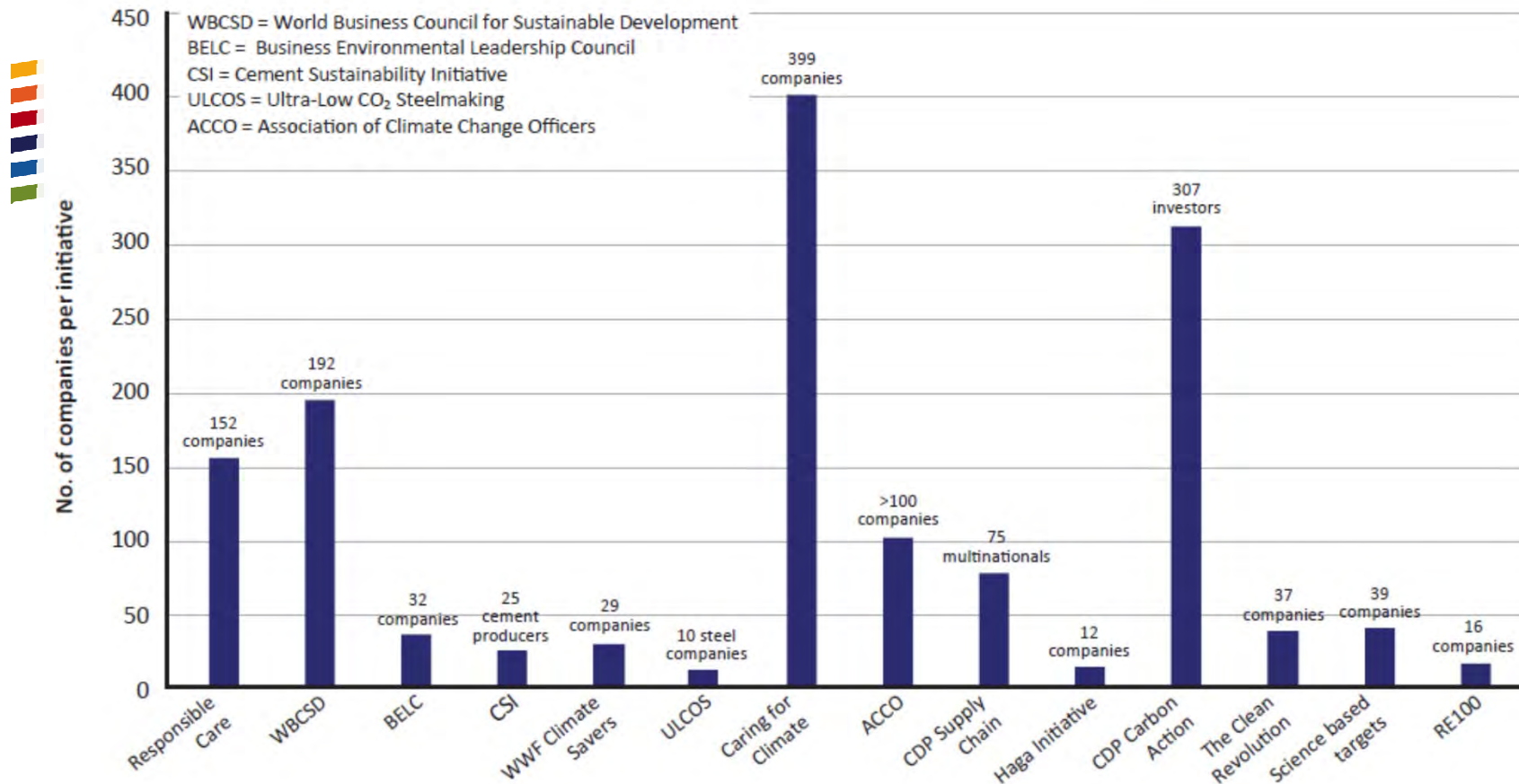
Approach to impact assessment



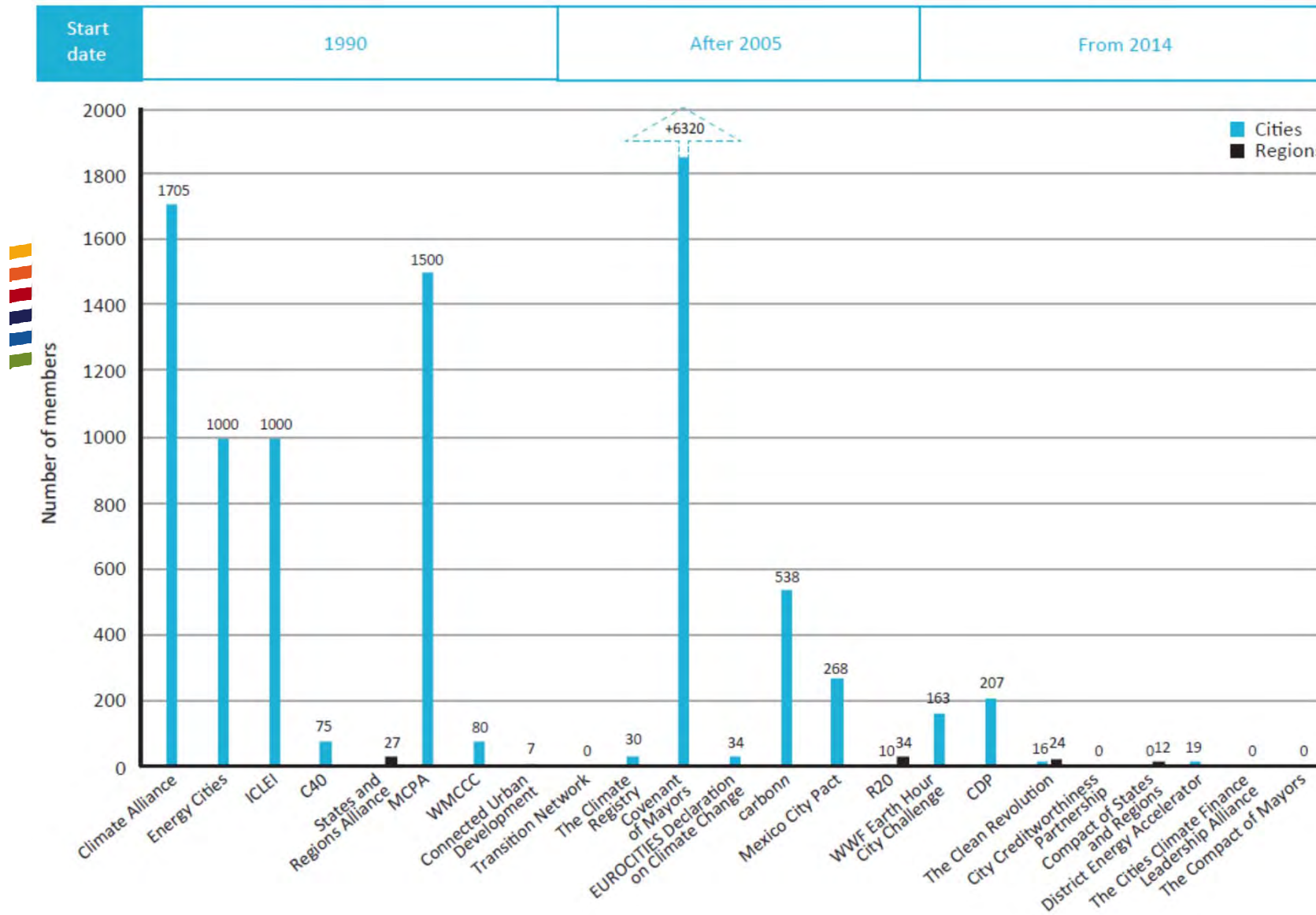
- Quantitative assessment of
 - emission reduction impact of
 - existing initiatives that
 - have concrete mitigation action or targets
 - have the capacity to deliver
 - a potential above a threshold.
- 15 initiatives met these criteria
- Initiatives around actors and around themes
- Focus on 2020 – for a reason

Corporate climate action

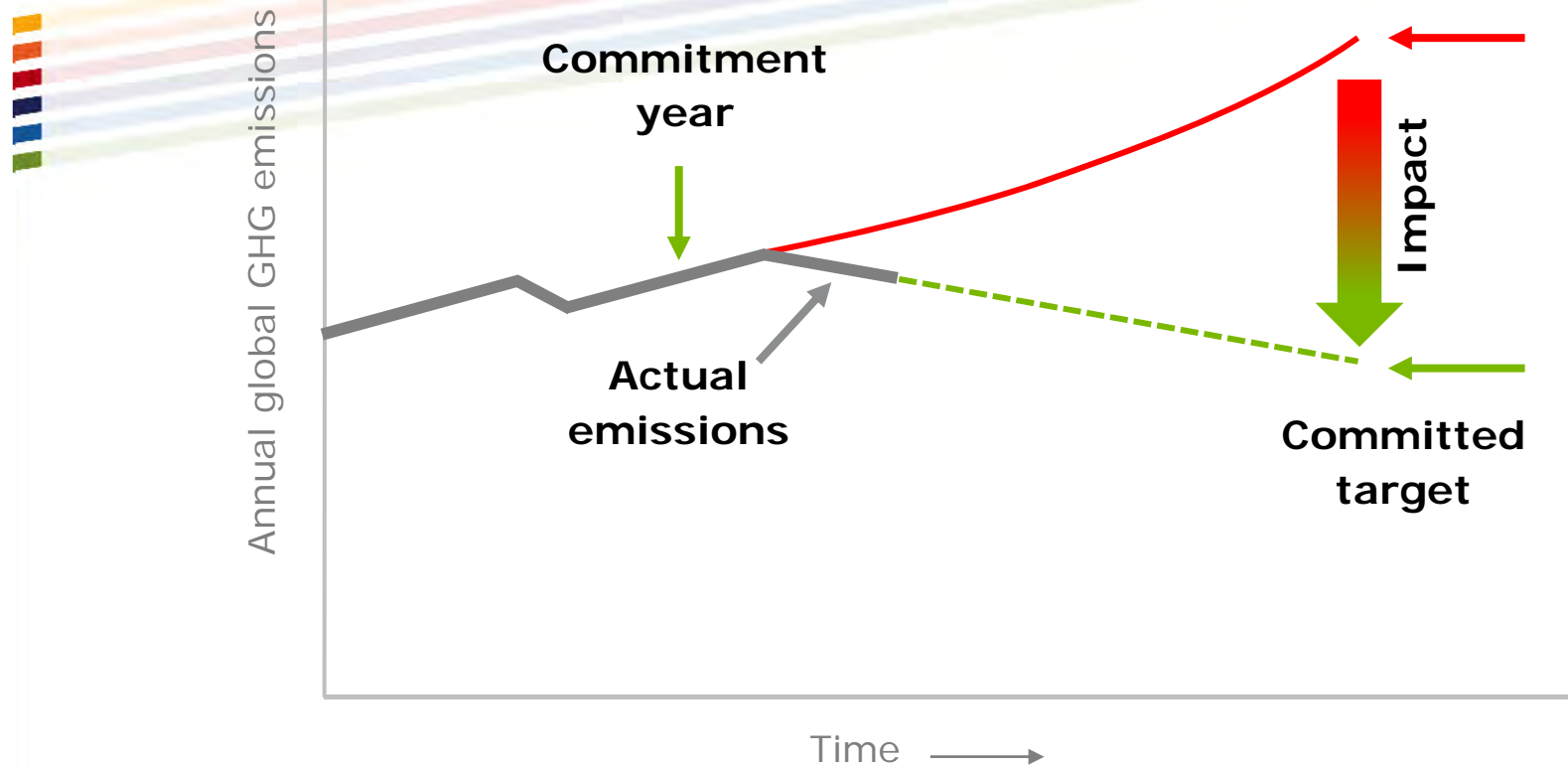
Start date	Before 2000	2000-2010	After 2010
------------	-------------	-----------	------------



Actions from cities and regions



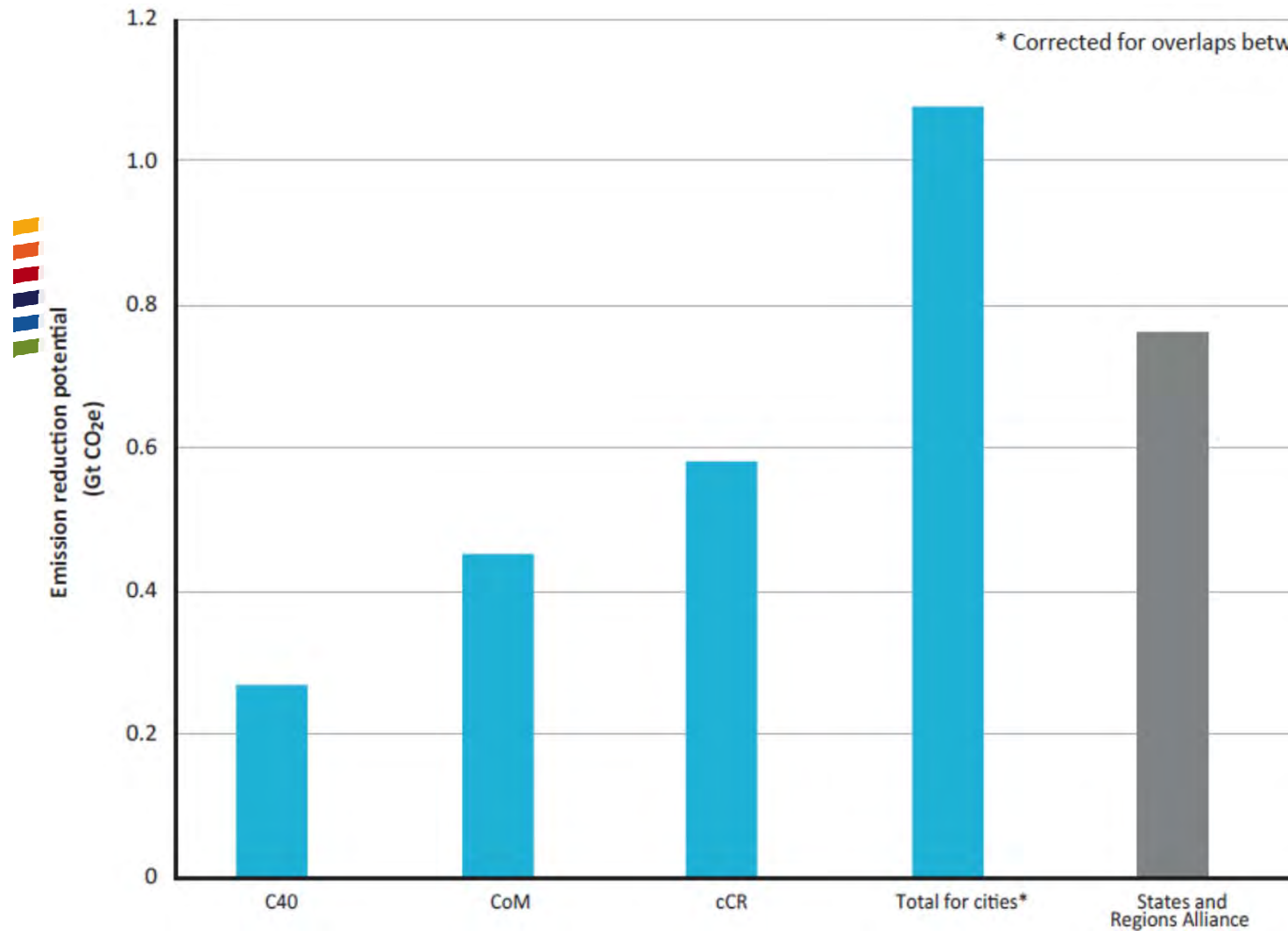
How is impact determined?



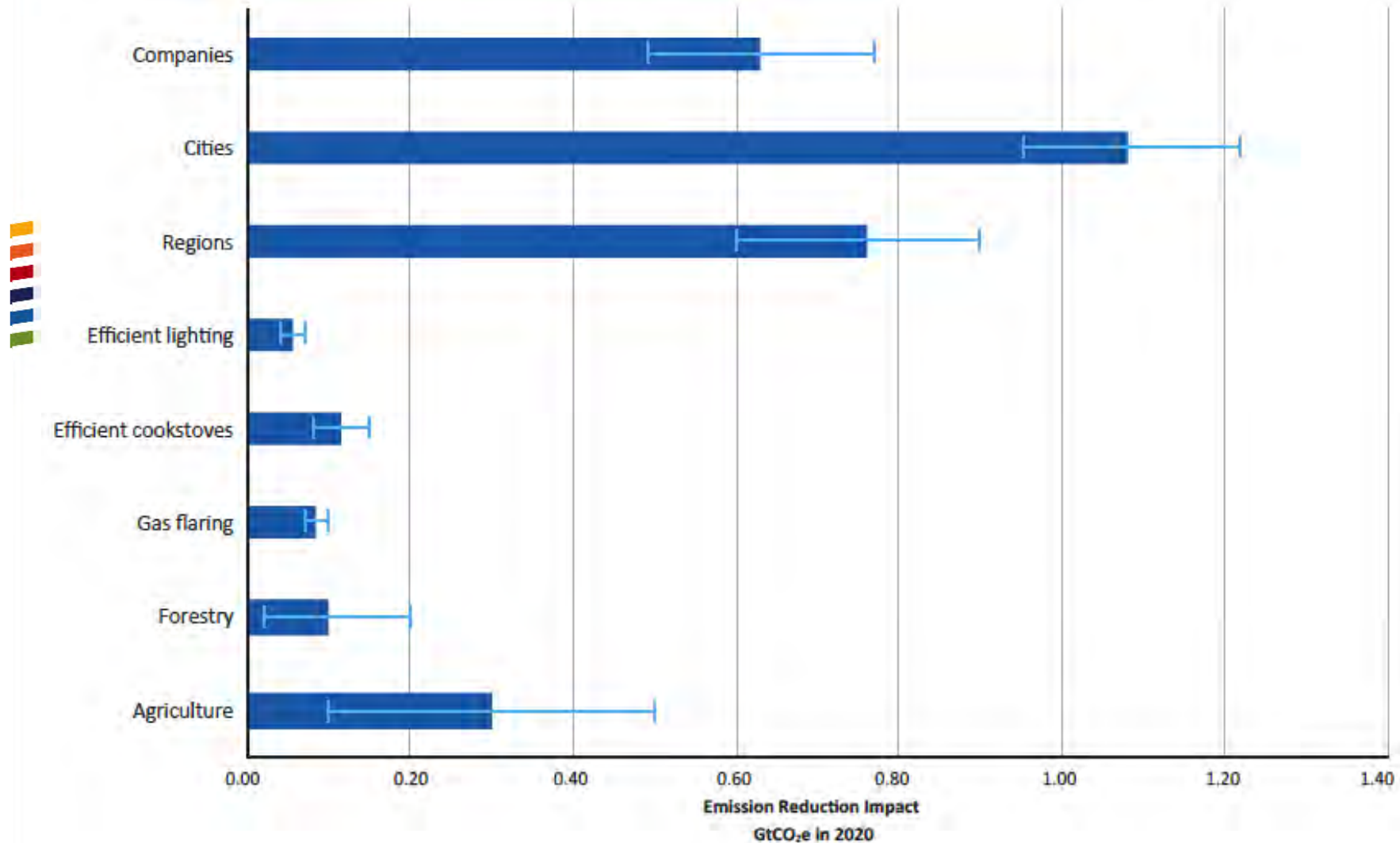
Data sources

Category	Data sources
Companies	CDP database – individual Individual company information (sample 50 companies)
Cities	carbonn Climate Registry CDP (C40) – individual EC-JRC (CoM)
Regions	The Climate Group – individual

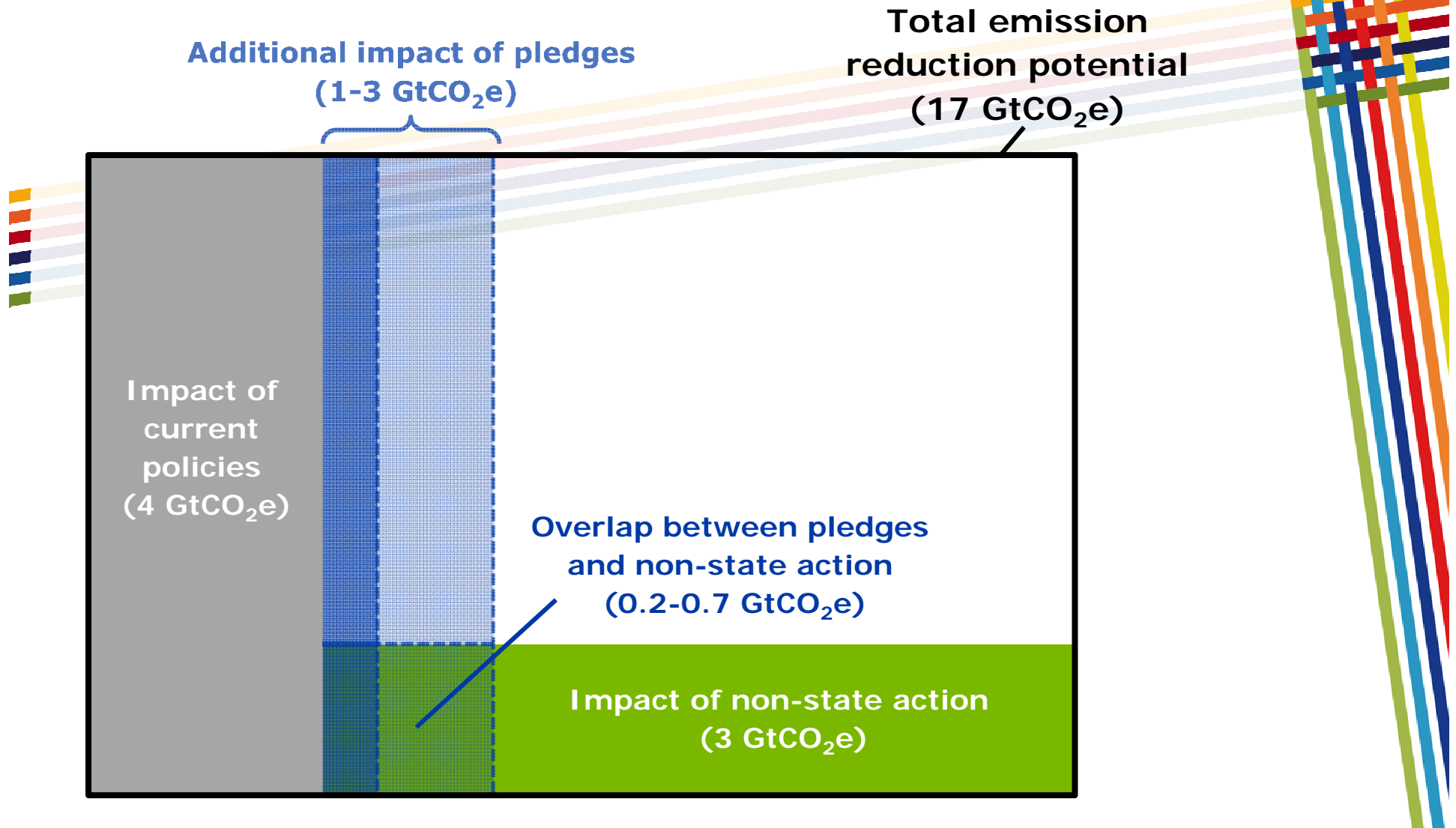
Impact of actions from cities and regions



Impact of climate action



Overlap with national pledges



Sources of uncertainty



- Baseline emissions (sensitivity $\pm 0.3\%/y$)
- Sampling (for companies)
- Impact of avoided emissions per cookstove
- BaU development for palm oil expansion
- Agriculture emission factor development

Conclusions

- Impact of initiatives from cities, regions, companies and sectors is 2.9 GtCO₂e
(uncertainty range 2.5-3.3 GtCO₂e)
- Overlap with government pledges is less than 1 GtCO₂e
(impact of pledges 5 – 7 GtCO₂e, UNEP Gap report)

Thank you!



Prof. dr. Kornelis Blok
Director of Science

Ecofys
Kanaalweg 15-G
3526 KL Utrecht

Phone: 030-6623399
E-mail: k.blok@ecofys.com
Twitter: @kornelisblok

www.ecofys.com

sustainable energy for everyone